

# The Bridge District

Parcels 3 & 4

632 Howard Rd. SE  
Washington DC

The Douglass LLC  
1627 Eye St NW, Suite 920  
Washington, DC 20006  
T 202 393 8090

Prepared for DC Zoning Submission

July 30, 2021

632 Howard Rd. SE Washington DC

REDBRICK LMD  | ZGF



## Project Team:

### Ownership

The Douglass LLC  
1627 Eye St NW, Suite 920  
Washington, DC 20006  
T 202.393.8090

### Zoning Attorney

Goulston & Storrs  
1999 K Street NW, 5th Floor  
Washington, DC 20006  
T 202.721.0011

### Architect

ZGF Architects LLP  
600 14th Street NW, Suite 800  
Washington, DC 20005  
T 202.380.3120

### Civil

Wiles Mensch Corp - DC  
510 8th Street SE  
Washington, DC 20003  
T 202.638.4040

### Landscape

Lemon Brooke, LLC  
31 Oxbow Road  
Concord MA 01742  
T 978.849.3185

### Structural

SK&A  
1155 Connecticut Ave NW, Suite 800  
Washington, DC 20036  
T 202.659.2520

### Interiors

Cecconi Simone Inc  
1335 Dundas Street West,  
Toronto, Ontario M6J 1Y3  
T 416.588.5900

### MEP

Integral Group, Inc  
750 17th Street NW, Suite 200  
Washington DC 20006  
T 202.539.6130

## Architectural Series

A0.01 Table of Contents  
A0.02 Location Map  
A0.03 Site Context  
A0.04 Site Connectivity  
A0.05 Neighborhood Amenities  
A0.06 Site Aerial View  
A0.07 Project Priorities  
A0.08 Future Development Aerial View  
A0.09 Phase 1 Development Site Plan  
A0.10 Future Development Site Plan  
A0.11 Site Circulation & Access

A1.01 Zoning Map  
A1.02 Zoning Analysis Summary  
A1.03 GFA & FAR  
A1.04 Unit Mix  
A1.05 Inclusionary Zoning  
A1.06 Courtyard Diagram  
A1.07 Porch Diagram  
A1.08 Porch Diagram  
A1.09 LEED Scorecard  
A1.10 GAR Scorecard

A2.01 Concept Diagram  
A2.02 Project Site Plan  
A2.03 Plan - Parking B2  
A2.04 Plan - Parking B1  
A2.05 Plan - Ground Level  
A2.06 Plan - Mezzanine  
A2.07 Plan - Second Floor  
A2.08 Plan - Typical Floor  
A2.09 Plan - Penthouse  
A2.10 Plan - Roof

A3.01 Section - Overall East / West  
A3.02 Section - North / South at Grocery  
A3.03 Section - North / South at Alley  
A3.04 Penthouse - Sections

A4.01 Rendering - Aerial View  
A4.02 Rendering - SW Corner  
A4.03 Rendering - SW Corner Enlarged  
A4.04 Rendering - Howard Road  
A4.05 Rendering - Public Access Easement  
A4.06 Rendering - SE Corner  
A4.07 Rendering - NE Corner Enlarged  
A4.08 Rendering - NE Corner  
A4.09 Rendering - Promenade

A4.10 Rendering - NW Corner

A5.01 Façade Type Diagram  
A5.02 Exterior Materials Palette  
A5.03 Tower Façade - Type 1  
A5.04 Tower Façade - Type 2  
A5.05 Tower Façade - Type 3  
A5.06 Retail Base Façade - Type 1  
A5.07 Retail Base Façade - Type 2  
A5.08 Retail Base Façade - Type 3

A6.01 Elevation - South  
A6.02 Elevation - North  
A6.03 Elevations - East & West  
A6.04 Elevations - SW / SE Courtyards  
A6.05 Elevation - NE Courtyard  
A6.06 Elevations - NW / W Courtyards

## Civil Series

C0.01 Plat Plan  
C0.02 Existing Conditions Plan  
C0.03 Existing Conditions Notes & Legend

C1.01 Site Plan  
C1.02 Grading Plan  
C1.03 Utility Plan

## Landscape Series

L1.01 Landscape Plan - Level 1  
L1.02 Enlarged Plan - Howard Street  
L1.03 Section 1.A - Howard Road  
L1.04 Section 1.B - Howard Road  
L1.05 Enlarged Plan - Alley  
L1.06 Section 1.C - Alley  
L1.07 Enlarged Plan - Plaza  
L1.08 Section 1.D - Plaza  
L1.09 Section 1.E & 1.F - North Promenade  
L1.10 Materials & Plant Palette - Level 1

L2.01 Landscape Plan - Level 2 Terraces  
L2.02 Enlarged Plan - Northeast Terrace  
L2.03 Section 2.A - Northeast Terrace  
L2.04 Enlarged Plan - Northwest Terrace  
L2.05 Section 2.B - Northwest Terrace  
L2.06 Enlarged Plan - West Terrace  
L2.07 Section 2.C - West Terrace

L2.08 Enlarged Plan - South Terraces  
L2.09 Precedent Images - South Terraces  
L2.10 Section 2.D - Southwest Terrace  
L2.11 Section 2.E - Southeast Terrace  
L2.12 Materials & Plant Palette - Level 2

L3.01 Landscape Plan - Penthouse  
L3.02 Enlarged Plan - Pool Terrace  
L3.03 Section 3.A - Penthouse Pool  
L3.04 Section 3.B - Penthouse Terrace  
L3.05 Materials & Plant Palette - Pool Terrace  
L3.06 Materials & Plant Palette - Penthouse

L4.01 Landscape Plan - Rooftop  
L4.02 Materials & Plant Palette - Rooftop

## Appendix A: Site & Project Views

A7.01 Site Views Key Plan  
A7.02 View From Pleasant Street SE  
A7.03 View From Howard Road SE  
A7.04 View From Barry Farm  
A7.05 View From Buzzard Point  
A7.06 View From Navy Yard  
A7.07 Views From Project Site  
A7.08 Views From Project Site  
A7.09 Views Unaltered by Project  
A7.10 Views Unaltered by Project

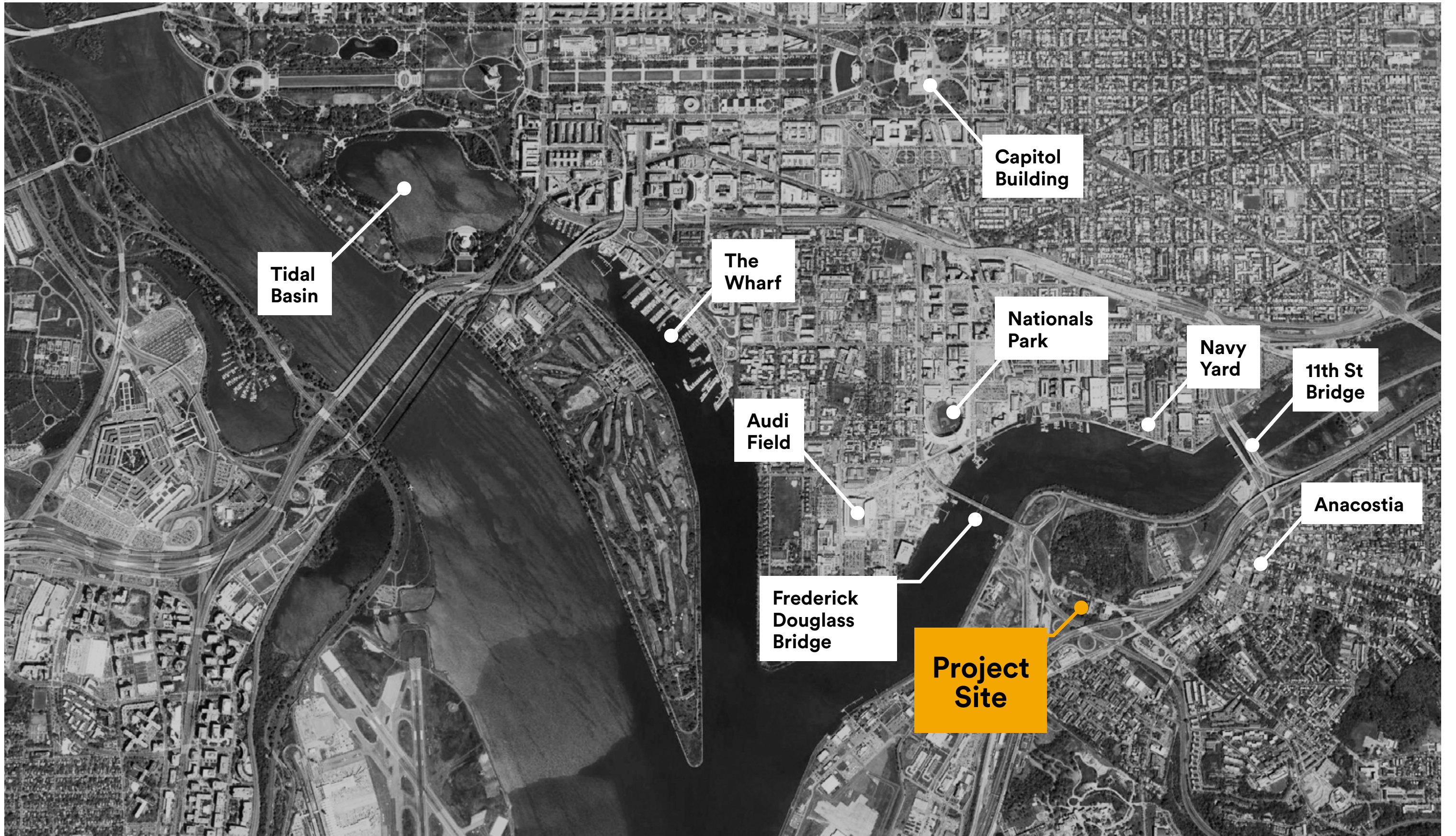
## Appendix B: Floodplain Exhibit

C2.01 Floodplain Exhibit - Existing  
C2.02 Floodplain Exhibit - Plan  
C2.03 Floodplain Exhibit - Sections

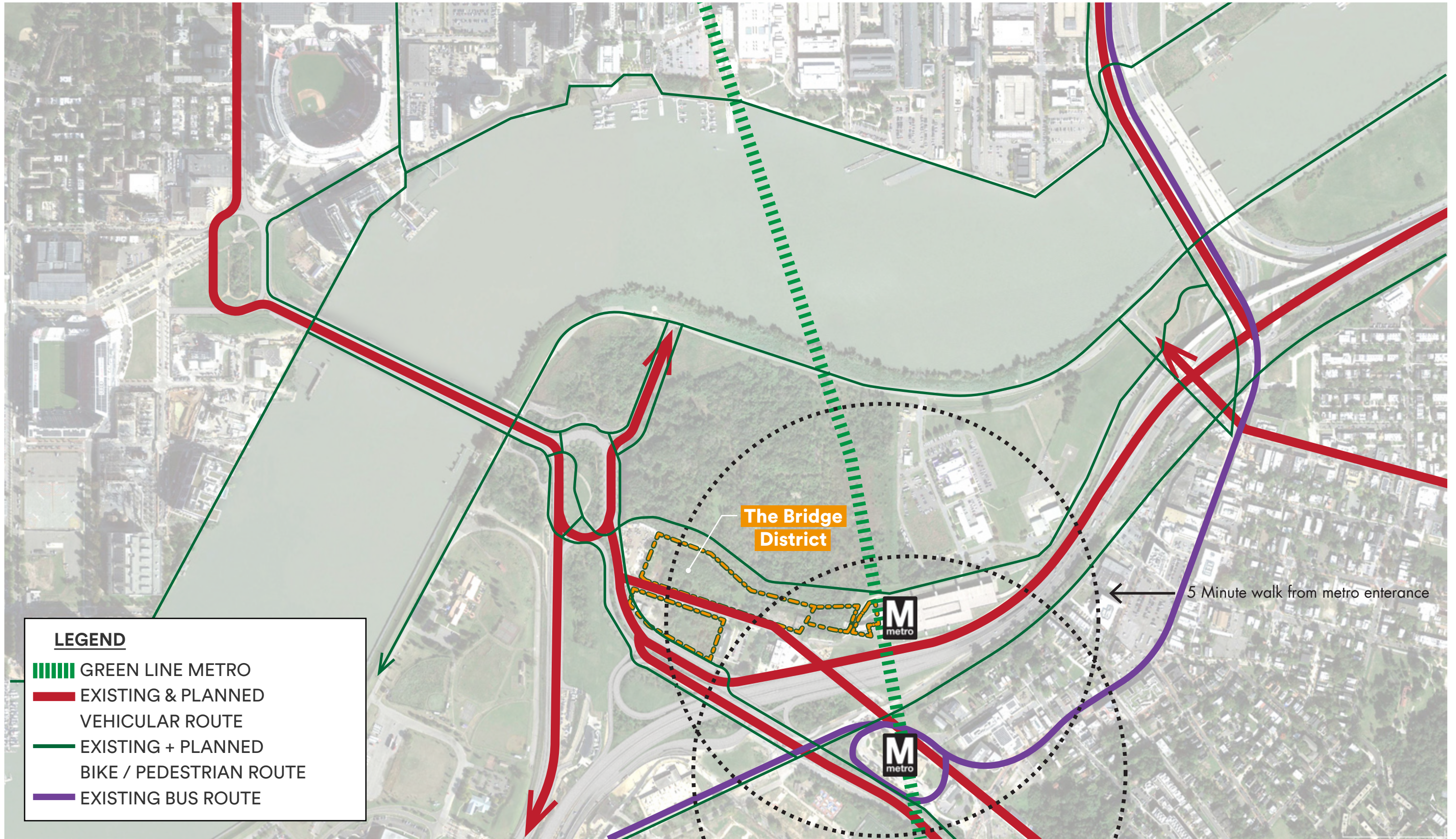
## Appendix C: Vehicle Maneuvering Diagrams

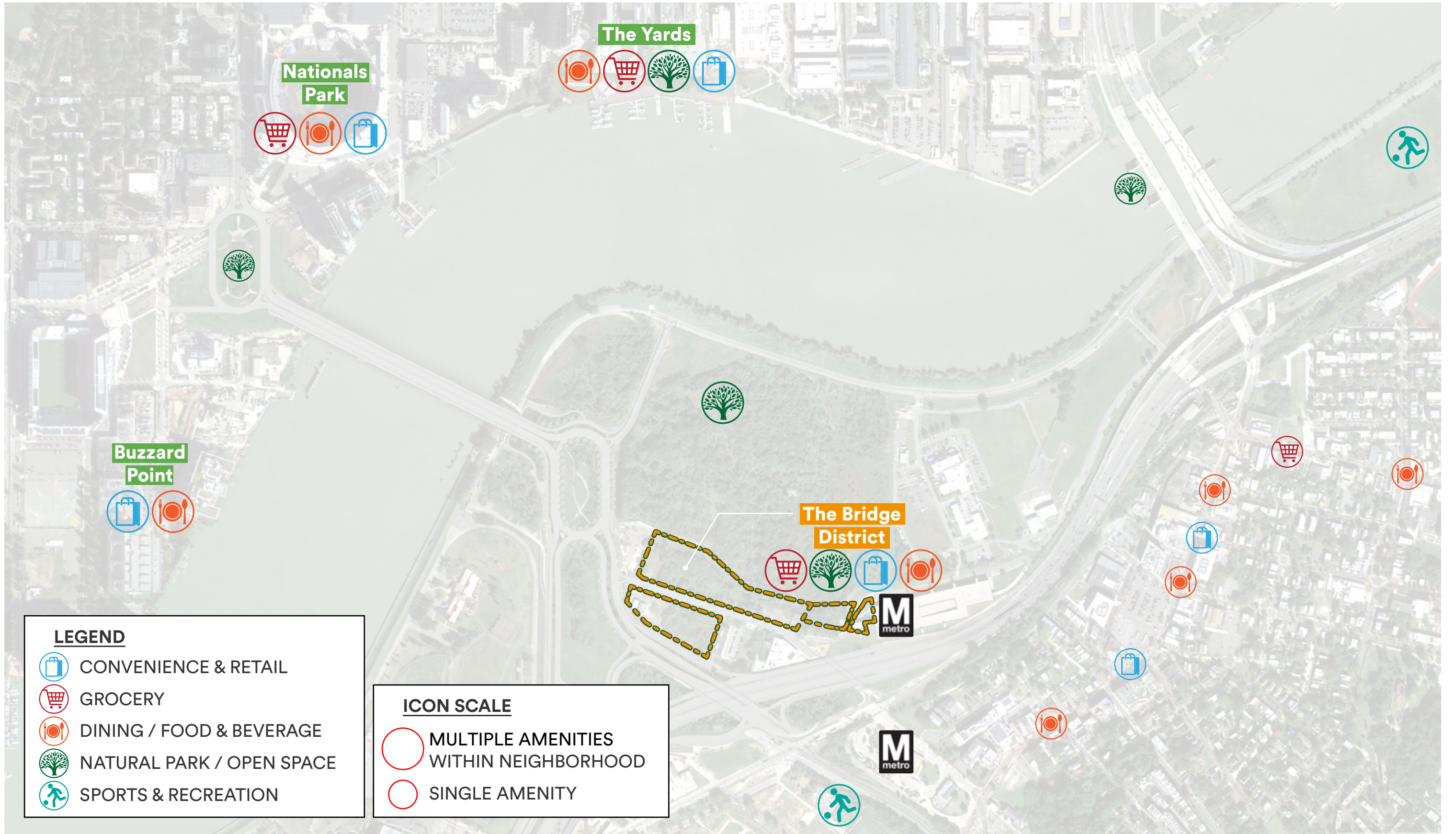
T0.01 Vehicle Profiles

T1.01 WB-67 & WB-50 Turn Movements  
T1.02 SU-30 Turn Movements  
T1.03 Cargo Van Turn Movements











**LEGEND**

-  CONVENIENCE & RETAIL
-  GROCERY
-  DINING / FOOD & BEVERAGE
-  NATURAL PARK / OPEN SPACE
-  SPORTS & RECREATION

**ICON SCALE**

-  MULTIPLE AMENITIES WITHIN NEIGHBORHOOD
-  SINGLE AMENITY



Audi Field

Frederick Douglass Memorial Bridge

Nationals Park

Howard Road SE  
Project Site

Anacostia Freeway

## Connect to the City & River



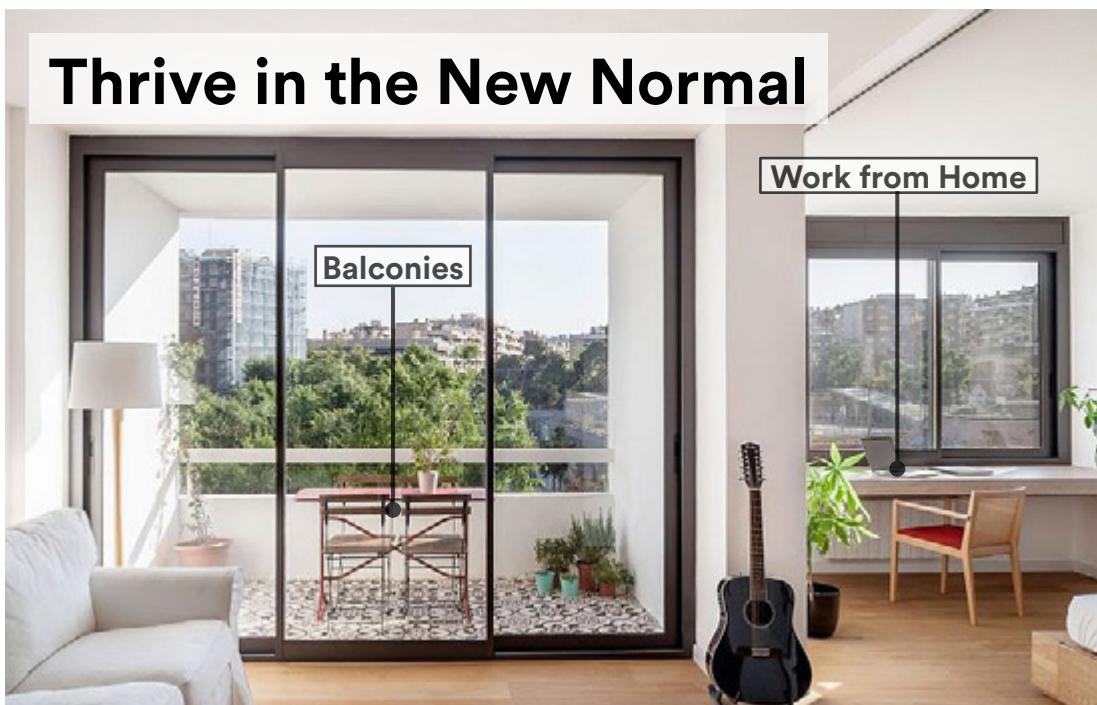
## Create Place



### Project Priorities

The Project will be the first development in the Bridge District and in the overall NHR zone. As such, it serves as the cornerstone of the future community on this largely undeveloped land. The Project provides the start needed in the Bridge District to create a thriving, high-density neighborhood with a mix of residential, including affordable residential, retail, including community-serving and local retail, entertainment, and office uses. The Project also presents the beginning of the public space improvements and surrounding community improvements that are being made as part of the development of the Bridge District. Four “Project Priorities” form the pillars that have guided the project’s design thinking.

## Thrive in the New Normal



## Connect to Nature



First, the Project planning will Connect to the City & River through enhanced physical and visual links to Central DC, Historic Anacostia, and surrounding open spaces. As the first development of a planned district, the Project strives to Create Place that is active throughout the day and night, open and available to all, and defined by a character both forward-looking and rooted in local conditions. Recognizing the transformations that the Global Pandemic has taken on our home and work spaces alike, the building will provide what its residents will need to Thrive in the New Normal. Finally, the need to Connect to Nature is both an identity and moral imperative for this Project. Getting outside on balconies, terraces, and the surrounding parks are as integral to the design as its ambitious carbon-reduction and sustainable design targets.







